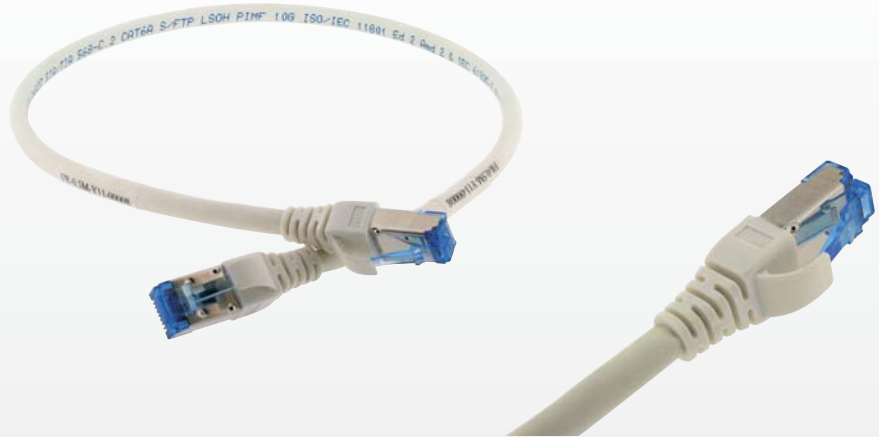


CATEGORY 6_A 10G SCREENED PATCH CORDS

- Designed to meet ISO/IEC 11801 amd.2 : 2010
- Identification label included



All Cat.6_A screened patch cords incorporate short body blue plugs (50µ) that use an integral pair manager to optimize performance and reducing untwisting of conductors within the plug. Slim Snagless molded boots are incorporated which increase protection of the plug latch, offer maximum strength construction.

Assembled in a controlled environment using advanced manufacturing process to insure stable quality and performance.

Patch cords are manufactured using Cat6_A S/FTP 27AWG stranded cable for better flexibility

Labels on patch cords provide identification of length, operator and quality control number.

100% patch cords are tested after production, individual test included in each packing.

GLOBAL CHARACTERISTICS

PLUG

RJ45 Shielded 2 Prongs, single layer insert, Pin Gold Plated 50µ
UL listed 94V-0 flame retardant polycarbonate housing
750 cycles min. insertion / extraction life
Operation environmental conditions : -10°C to + 60°C

BOOT

Slim Line colored molded plastic boots

CABLE

Conductor Cat6_A 27 AWG S/FTP Stranded LSOH
Stranded Copper 27 AWG (7 /0.136 mm)
Insulation Foamed PE, nom. 1.02 mm
Outer diameter Nom. 5.8 mm
LSOH IEC 60332-1
Cable mark GIGAMEDIA DELTA VERIFIED AWG27 EIA/TIA 568-C.2 CAT6A
S/FTP LSOH PIMF ISO/IEC 11801 Ed Amd2 & IEC 61935-2

SHIELDING

Individual shielding with layer of aluminum-foil side face-out
Tinned copper wire braiding, min. 40% coverage

IDENTIFICATION LABEL CONTENT

FR – xx M (length) – Z (2011, production year) 00 (production month) – S/N

ENVIRONMENTAL CONDITIONS

Storage From -40°C to +70°C
Operation From -10°C to +60°C

MECHANICAL

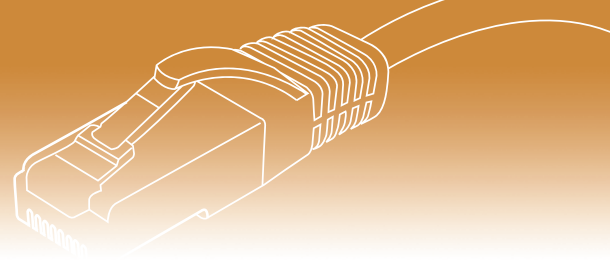
Retention 50 N for 60" ± 5"
Tensile strength >20 N per wire

COMPLIANCE

ANSI/TIA-568-C.2 Category 6A
IEC 60603-7-51 : 2010
ISO/IEC 11801 Amd 2 : 2010
EN 50173-2 : 2007, A1 : 2010

APPLICATION

Ethernet : 10/100 Base TX
Gigabit Ethernet 1000 Base TX (802.3ab)
IEEE 10G Base-T (802.3an)
ATM155 Mbit/s
PoE



PERFORMANCES

(MINIMUM)

	ATTENUATION MAX (dB/100 M @ 20°C)	NEXT MINI (dB)	PSNEXT MINI(dB)	ELFEXT MINI(dB)	PSELFEXT MINI(dB)
1 MHZ	3.1	74.3	72.3	67.8	64.8
4 MHZ	5.7	65.3	63.3	55.8	52.8
10 MHZ	9.0	59.3	57.3	47.8	44.8
16 MHZ	11.4	56.2	54.3	43.7	40.7
20 MHZ	12.7	54.8	52.8	41.8	38.8
31.25 MHZ	16.0	51.9	49.9	37.9	34.9
62.5 MHZ	23.1	47.4	45.4	31.9	28.9
100 MHZ	29.7	44.3	42.3	27.8	24.8
150 MHZ	33.6	42.8	40.8	25.9	22.9
200 MHZ	43.5	39.8	37.8	21.8	18.8
250 MHZ	49.2	38.3	36.3	19.8	16.8
500 MHZ	73.3	33.8	31.8	13.8	10.8

	RETURN LOSS (dB MINI)	PROPAGATION DELAY (ns MAX)	DELAY SKEW (ns MAX)
1 MHZ	20.0	570.0	45
4 MHZ	23.0	552.0	45
10 MHZ	25.0	545.4	45
16 MHZ	25.0	543.0	45
20 MHZ	25.0	542.0	45
31.25 MHZ	23.3	540.4	45
62.5 MHZ	20.7	538.6	45
100 MHZ	19.0	537.6	45
150 MHZ	18.1	537.2	45
200 MHZ	16.4	536.6	45
250 MHZ	15.6	536.3	45
500 MHZ	13.0	535.6	45

ORDERING INFORMATION

LENGTH	WHITE	BLUE	GREEN	YELLOW	RED	ORANGE	BLACK
0,3 m	GGM CAT6AS03MWH						GGM CAT6AS03MBK
0,5 m	GGM CAT6AS05MWH	GGM CAT6AS05MBL	GGM CAT6AS05MGN	GGM CAT6AS05MYL	GGM CAT6AS05MRD	GGM CAT6AS05MOG	GGM CAT6AS05MBK
1 m	GGM CAT6AS1MWH	GGM CAT6AS1MBL	GGM CAT6AS1MGN	GGM CAT6AS1MYL	GGM CAT6AS1MRD	GGM CAT6AS1MOG	GGM CAT6AS1MBK
1,5 m	GGM CAT6AS1M5WH	GGM CAT6AS1M5BL					
2 m	GGM CAT6AS2MWH	GGM CAT6AS2MBL	GGM CAT6AS2MGN	GGM CAT6AS2MYL	GGM CAT6AS2MRD	GGM CAT6AS2MOG	GGM CAT6AS2MBK
2,5 m	GGM CAT6AS2M5WH						
3 m	GGM CAT6AS3MWH	GGM CAT6AS3MBL	GGM CAT6AS3MGN	GGM CAT6AS3MYL	GGM CAT6AS3MRD	GGM CAT6AS3MOG	GGM CAT6AS3MBK
4 m	GGM CAT6AS4MWH						
5 m	GGM CAT6AS5MWH	GGM CAT6AS5MBL	GGM CAT6AS5MGN	GGM CAT6AS5MYL	GGM CAT6AS5MRD	GGM CAT6A05MOG	GGM CAT6AS5MBK
7 m	GGM CAT6AS7MWH	GGM CAT6AS7MBL					
8 m	GGM CAT6AS8MWH						
10 m	GGM CAT6AS10MWH	GGM CAT6AS10MBL	GGM CAT6AS10MGN	GGM CAT6AS10MYL	GGM CAT6AS10MRD	GGM CAT6AS10MOG	GGM CAT6AS10MBK
15 m	GGM CAT6AS15MWH	GGM CAT6AS15MBL					
20 m	GGM CAT6AS20MWH	GGM CAT6AS20MBL					